



MATERIAL SAFETY DATA SHEET

Triple-C Mulch

Updated
04/2018

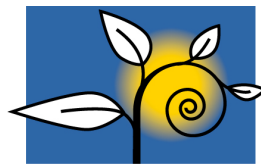
Identification of the Material and Supplier	
Product Name:	Triple-C Mulch
Other Names:	DSATCO Triple-C Mulch; Vivantes Triple-C Mulch
Recommended Use:	General Horticulture and landscaping purpose.
Supplier:	DSATCO PTY LTD 8 Jensen Street Wongan Hills WA 6603 Telephone: (08) 9671 1500

Hazards Identification	
Hazard Classification	Mulch products are classified as hazardous according to NOHSC Australia criteria.
Risk Phrase	Mulch is not classified as a Dangerous Good according to the ADG Code.

Composition/information on ingredients	
Chemical Identity	This product is a blend of raw composted natural organic materials.
Proportion of Ingredients	100%
CAS Number	None Allocated.

First Aid Measures	
Eye Contact	Immediately flush with lukewarm water for at least 15mins. Hold eye open while flushing with water. If irritation persists seek medical attention.
Skin Contact	Wash with warm soapy water. If rash or irritation occurs seek medical attention.
Inhalation	Remove affected person from exposure to a well ventilated area. If irritation persists seek medical attention.
Ingestion	Product contains legume based plant matter ingredients which also belong to the same genus as peanuts and may affect people who have nut allergies

Fire Fighting Measures	
Flammability	Flammable but does not support combustion.



Suitable Extinguishing Media	Water or Class A extinguishers.
Hazchem Code	None Allocated.

Accidental Release Measures	
Emergency Procedures	Not Applicable.
Methods and Materials for Containment and Cleanup	Not Applicable.

Handling and Storage	
Precautions for Safe Handling	Always wear a mask and gloves. Keep product moist while applying. Avoid inhaling the mix and always wash hands after use.
Conditions for Safe Storage	Store in a cool dry well ventilated area within the original packaging.

Exposure Controls/Personal Protection	
National Exposure Controls	No Specific exposure standards have been allocated for mulch products.
Engineering Controls	Use in open or well ventilated areas. All work with this product should be carried out precautions to avoid skin and eye contact and minimize exposure to dust.
Personal Protective Equipment	Face mask & gloves while applying. Always wash hand thoroughly after working with mulch products.

Physical and Chemical Properties	
Appearance	Light Brown coarse organic matter.
Odour	Sweet natural odour.
Vapour Pressure	Not Applicable.
Boiling Point	Not Applicable.
Melting Point	Not Applicable.
Solubility in Water	Not readily soluble.
pH Value	6-6.5

Stability and Reactivity	
Stability	Stable under normal conditions of storage and use.
Reactivity	Not Applicable.
Incompatible Materials and Conditions to Avoid	None known.



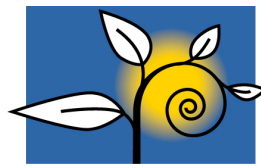
Decomposition Products	None known.
------------------------	-------------

Toxicological Information

Health Effects	<p>Acute Health Effects <u>Mulch products dust is recognised to be a potential health hazard.</u> This material contains a variety of living organisms, including bacteria, fungi and protozoa. People should handle with care and use of all recommended protective equipment.</p> <p>Chronic health effects Direct contact and repeated inhalation of dust from this product may cause skin irritation or infection, respiratory irritation, inflammation or sensitisation of the nose, throat and lungs resulting in illness ranging from hay fever, asthma, bronchitis to pneumonia or other pneumonia-like illnesses (e.g. Legionnaires disease) Children, pregnant women, the elderly, people with pre-existing conditions or the immuno-compromised people may be at a particular risk from these illnesses if exposed to these products. All people working with this and other horticultural and landscaping products should safeguard themselves from tetanus.</p> <p>It is also to be noted that the product itself has legume based plants which is from the same family as peanuts. However, to our knowledge there have been no adverse reactions recorded. It is possible that people that have a nut allergy may get a reaction from Triple-C mulch.</p> <p><u>Inhalation</u> Inhalation of any amount of dust from this product may have an immediate or delayed effect to irritate, inflame or sensitise the nose, throat and lungs, and exacerbate pre-existing conditions such as asthma and bronchitis.</p> <p><u>Skin</u> Any level of skin contact with this product and/or its dust may lead to immediate or delayed skin irritation and susceptible people may cause skin sensation, dermatitis or skin infection.</p> <p><u>Eye</u> In the event that any dose of this material or dust comes into contact with eyes it may have an immediate or delayed irritating effect resulting in redness and watering or an infection.</p> <p><u>Swallowed</u> Ingestion is unlikely through normal uses. However, swallowing any amount of this product may cause immediate or delayed abdominal discomfort and increase the risk of gastro-intestinal infections.</p>
Toxicity Data	Not Applicable

Ecological Information

Ecotoxicity	Not Applicable.
-------------	-----------------



Persistence/ Degradability	All natural biodegradable material.
Mobility	Only mobile in significant wind or water.
Environment	Do not allow product to contaminate drains, ponds, streams and other waterways.

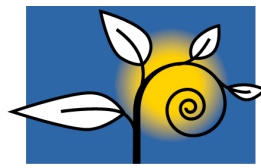
Disposal Considerations	
Disposal Methods	Dispose of product by using totally or collect in containers for disposal as trade waste in accordance with local authority guidelines.
Legislation	Dispose of in accordance with relevant legislation.

Transport Information	
UN Number	None allocated.
UN Proper shipping name	None allocated.
Class and subsidiary risk(s)	None allocated.
Packing Group	None allocated.
Special precautions for user	Truck to cover load (enclosed trailer or use tarpaulin) No other special storage or transport requirements necessary. Not classified at Dangerous Goods.
Hazchem Code	None allocated.

Other Information	
Key/ Legend acronyms used in this MSDS	<p>MSDS - Material Safety Data Sheet NOHSC - National Occupational Health and Safety Commission SUSDP - Standard for the Uniform Scheduling of Drugs and Poisons ADG - Australian Dangerous Goods pH - Relates to hydrogen ion concentration - this value will relate to a scale of 0-14, where 0 is highly acidic and 14 is highly alkaline.</p>

Important Notes	
1.	To the best of our knowledge this document complies with the national code of practice for the preparation of Material Safety Data Sheets (1st Edition)
2.	This material safety data sheet summarises our best knowledge of the health and safety hazard information of the product and how to safely handle and use the product. Each user should read this MSDS and consider the information in the context of how the product should be handled or used in the workplace, including in conjunction with other products.
3.	If clarification or further information is needed to ensure that an appropriate risk assessment can be made, the user should contact DSATCO PTY LTD on (08) 9671 1500 of Office@dsatco.com

DSATCO



MULCH

ABN 61 124 279 581

4.	DSATCO PTY LTD reserves the right to make changes to the MSDS without notice.
----	---